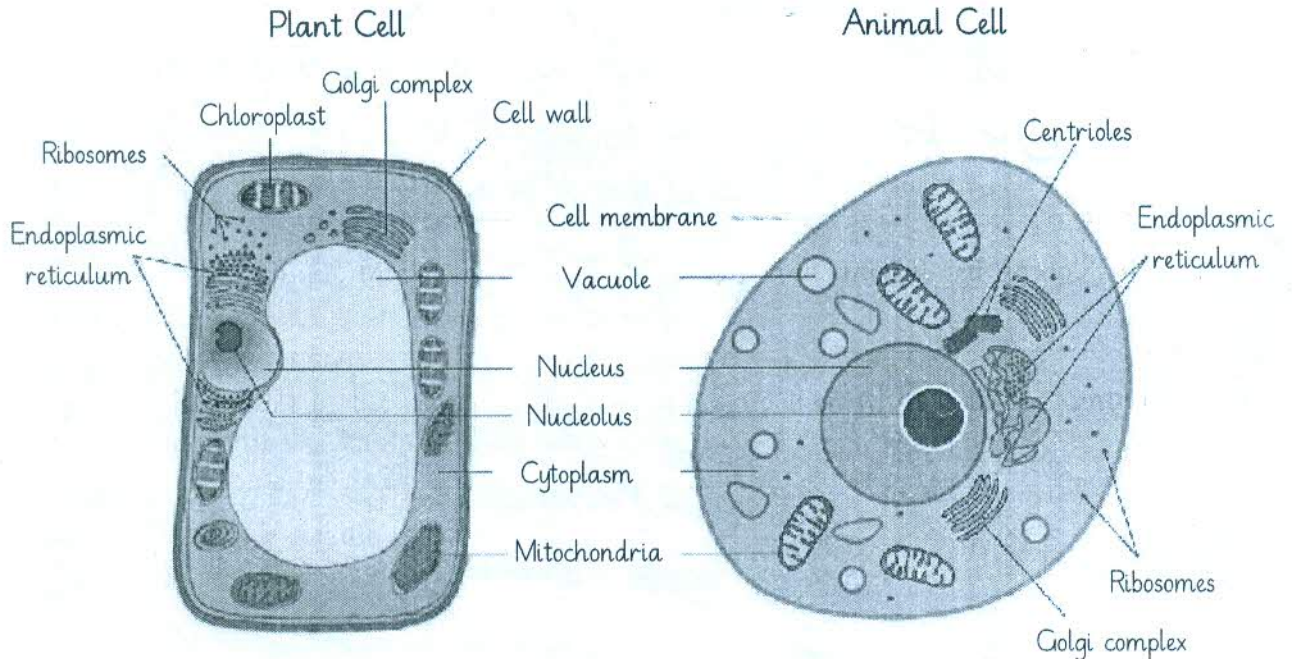


# Cellular Organization

**Cell:** A cell is defined as the structural as well as functional unit of the living organism. There are about 50 to 60 trillion cells in an adult human body.



1. What is the outer most covering of animal cell?

The cell membrane is the outer most covering of animal cell.

2. What is in the centre of plant cell?

Vacuole is in the centre of plant cell.

3. Why do you think plant cell need cell wall and animal cell do not?

Cell wall provides structural framework to support plant growth whereas in animal cell cell wall would make it

4. Is vacuole in the centre of animal cell? If no then what is in the centre?

difficult for animals to move.

No, vacuole is not in the centre of animal cell.

5. Can we see the cell with naked eye?

Nucleus is in the centre of it.

we can't see them with naked eye because

6. How many cells are in an adult human body?

they are too small.

There are almost 50 to 60 trillion cells in an adult human body.