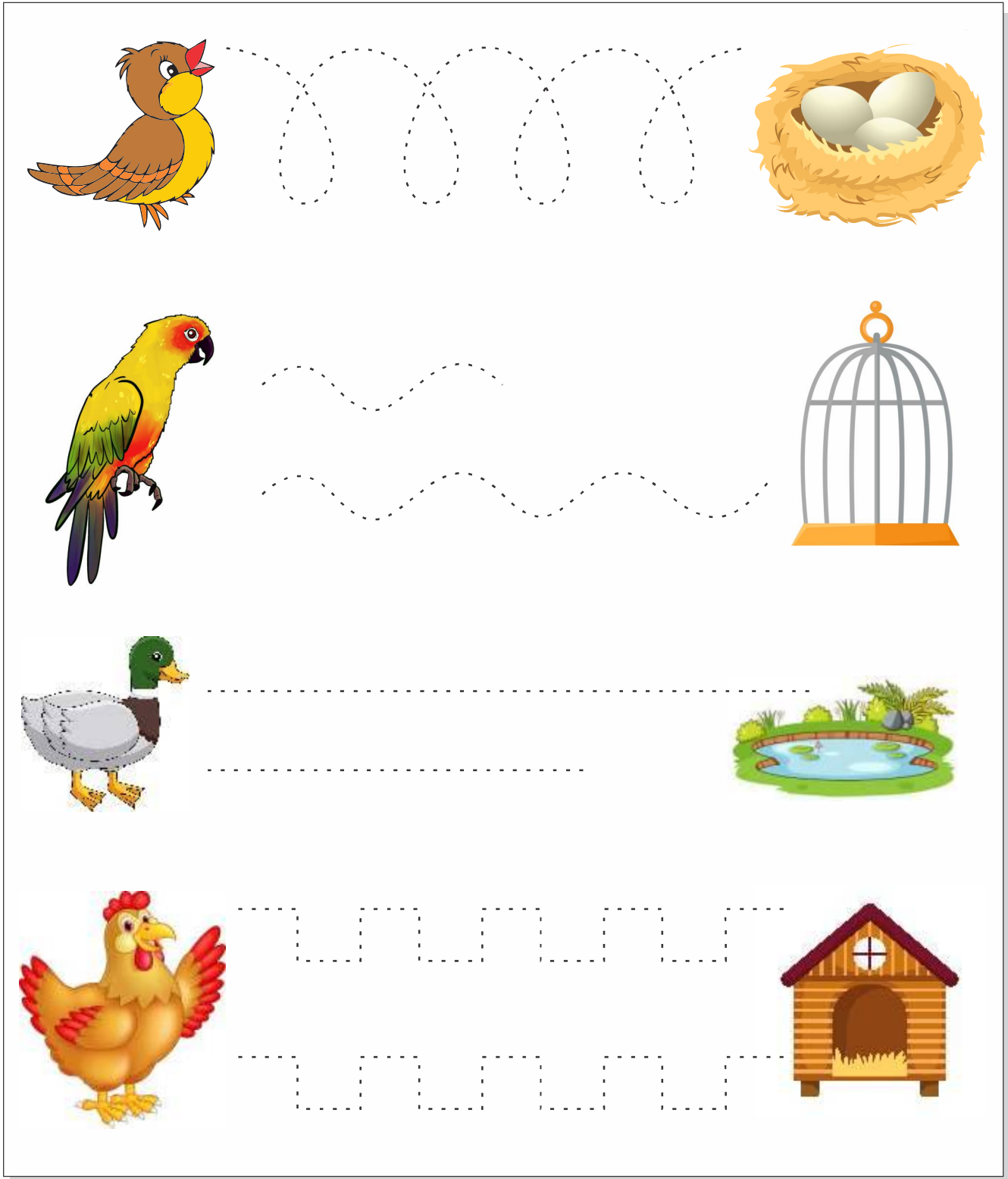




Student Name: \_\_\_\_\_ Date: \_\_\_\_\_

Help the birds to reach their home by tracing long lines:



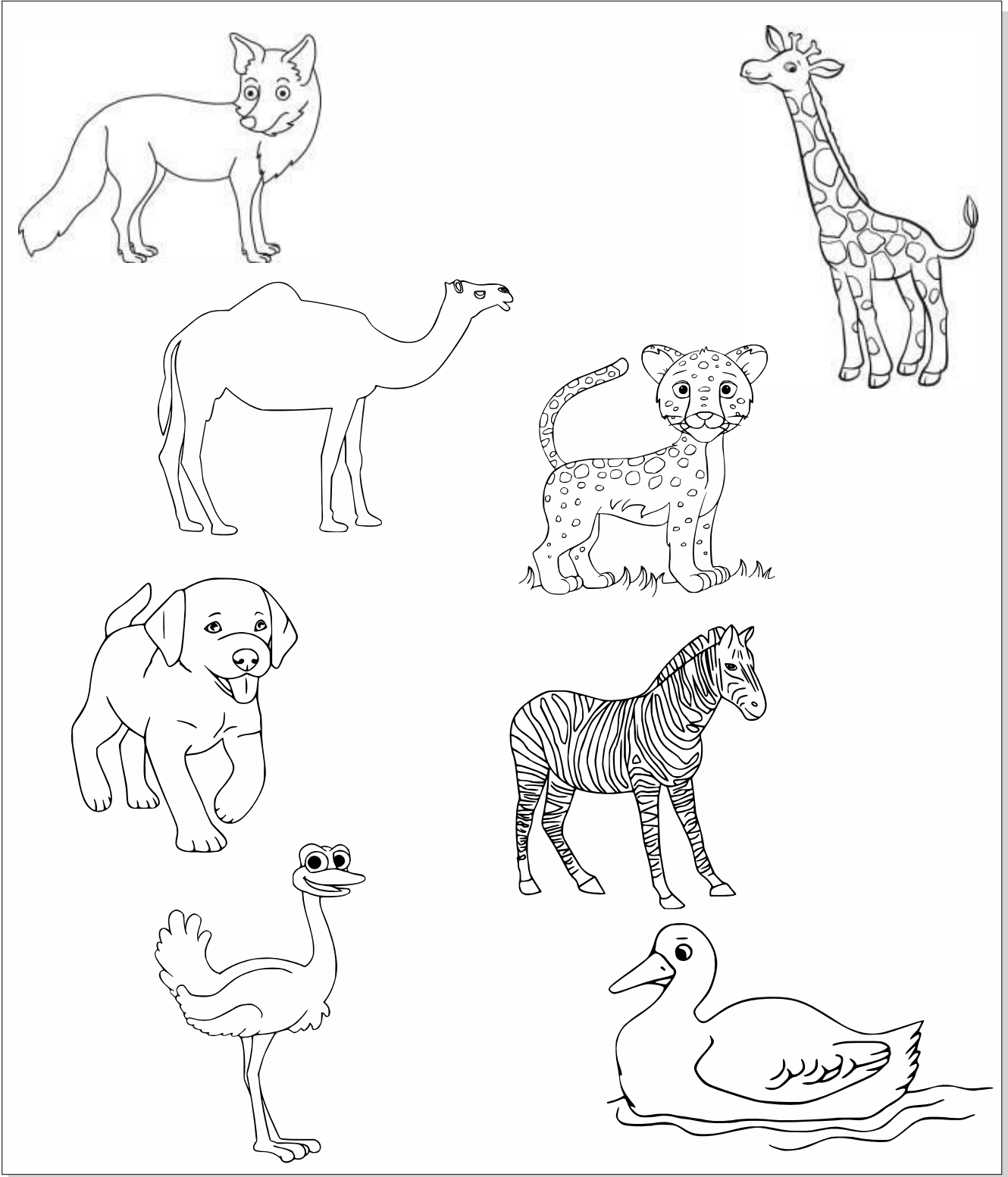
The activity consists of four rows, each with a bird on the left and its home on the right. The paths are represented by dashed lines for tracing.

- Row 1:** A brown and yellow bird on the left, a nest with three white eggs on the right. The path is a long, wavy line with four peaks.
- Row 2:** A colorful parrot on the left, a metal cage on the right. The path is a long, wavy line with three peaks.
- Row 3:** A duck on the left, a pond with lily pads on the right. The path is a long, straight horizontal line.
- Row 4:** A brown chicken on the left, a wooden coop on the right. The path is a long, zigzag line with four peaks.



Student Name: \_\_\_\_\_ Date: \_\_\_\_\_

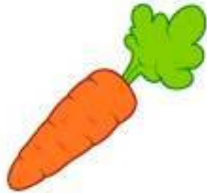
Colour the animals which are long.





Student Name: \_\_\_\_\_ Date: \_\_\_\_\_

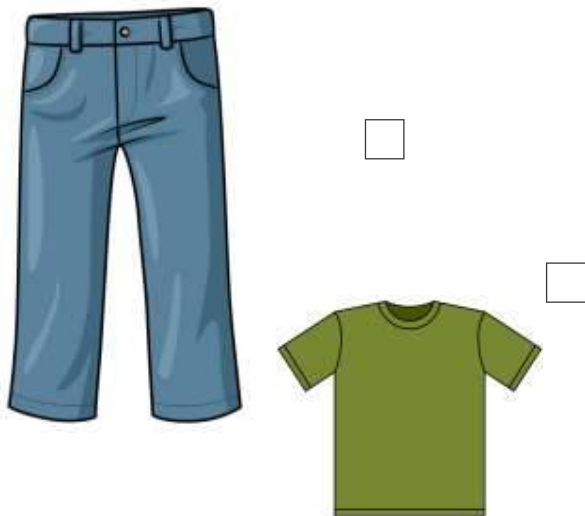
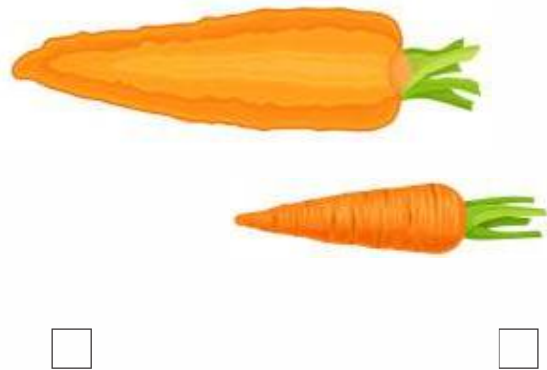
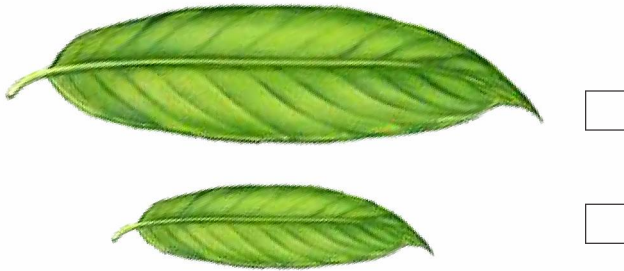
Circle the short objects:





Student Name: \_\_\_\_\_ Date: \_\_\_\_\_

Colour the short objects.





Student Name: \_\_\_\_\_ Date: \_\_\_\_\_

Colour the long objects blue and short objects green.

